

## REUSABLE PROTECTIVE APPAREL

### UNISEX PROTECTIVE COATS WITH SNAP CLOSURE AT NECK

- Front and sleeves made of single-ply fluid resistant barrier fabric
- Back constructed of Polyester / Cotton blend
- Concealed placket front with snap closure
- Throat-Guard collar with adjustable snap closure for improved neck protection
- Left breast pocket
- Two lower pockets
- Side slits for pocket access
- Back vent
- Knit cuffs



Texture Shield® (Front)  
Polyester / Cotton Blend (Back)

**6403**

Sizes: XS-XL (2XL-6XL extra charge)

### UNISEX PROTECTIVE COATS WITH "HOOK & LOOP" CLOSURE AT NECK

- Front and sleeves constructed of single ply fluid-resistant barrier fabric
- Back constructed of Polyester / Cotton blend
- Concealed placket front with snap closure
- Throat-Guard collar with "hook and loop" closure for improved neck protection
- Two lower pockets
- Back vent
- Knit cuffs



Texture Shield® (Front)  
Polyester / Cotton Blend (Back)

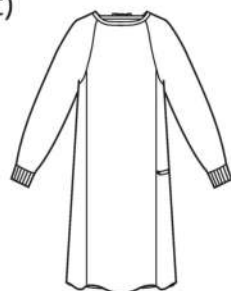
**403**

Sizes: XS-XL  
(2XL, 3XL extra charge)



### ALL-BARRIER PRECAUTION GOWN

- Entire garment constructed of single-ply fluid-resistant barrier fabric
- Two sets of tie closures (one at back of neck, one at waist)
- White knit cuffs
- 48½" length
- 60½" sweep



Fashion Shield®

**520**

#### Fashion Shield®

A high count, densely woven fabric employing 100% continuous filament man-made Polyester yarns, offering excellent fluid resistance properties.

#### Texture Shield®

Constructed from 100% high density continuous filament texturized Polyester yarns, offering a combination of fluid-resistance and comfort.



Long Lasting Grid For Process Cycle Control

## PATIENT GOWNS



### UNISEX EXAM GOWNS

- Inside and outside waist ties for easy examination and added modesty
- Allows examination while maintaining shoulder and back coverage
- 28½" length
- 70½" sweep



Poly/Cotton Fashion Poplin®

Sizes: L

636\* Also available in 3XL

**636** Eggplant  
**637** Plum  
**639** Blueberry

### ALL-STAR'S WOVEN FLAME-OUT® PEDIATRIC GOWNS

- Extra full cut
- Wide raglan sleeves
- Tie closure

100% Polyester Woven

**5501** Yellow  
**5503** Green



### PEDIATRIC GOWNS



G-raffe Yellow  
Size S (2-4)



Frog-E Green  
Size L (10-12)

All of our Children's Sleepwear is made with chemical-free fabrics with inherent flame resistant properties, specially made to exceed the stringent requirements of the Federal Children's Sleepwear Acts DOC-FF-3-71 and 5-74.

### IV GOWN

- Back overlap ties at neck & waist
- Metal snaps on sleeves

**692** 66" 48" 6" XL



### IV GOWN



Green Splendor  
100% Polyester



Blue VIP  
Poly/Cotton Sheeting

### PATIENT GOWNS

- Back overlap ties at neck & waist

**719** 76" 51" 6" 3XL

**1736** 55" 45" 6" L

**17122** 66" 51" 6" XL

### PATIENT GOWNS



Blue Optix  
Poly/Cotton Sheeting



Snowflake  
Poly/Cotton Sheeting



**MEDICAL APPAREL**  
www.foleylinen.com

Fashion Seal  
Healthcare®

# UNISEX COATS

## LONGEST LENGTH

### 41" LAB COAT

- Length based on size medium
- Button front
- Left breast pocket
- Two lower oversized outside pockets
- Side slits for pocket access
- Male Height: 6'2"; Chest Size: 39"; Wearing size M
- Female Height: 5'9"; Bust Size: 36"; Wearing size M

80% Polyester /  
20% Cotton Poplin  
**3492**

Sizes: 2XS-XL  
(2XL, 3XL extra charge)

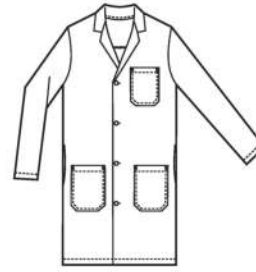


## MEN'S COATS

### 41" KNEE LENGTH LAB COAT

#### 41" LAB COATS

- Length based on size 40
- Button front
- Left breast pocket
- Two lower outside pockets
- Side slits for pocket access
- Male Height: 6'2"; Chest Size: 39"; Wearing size M



65% Polyester / 35% Cotton Poplin  
**485**

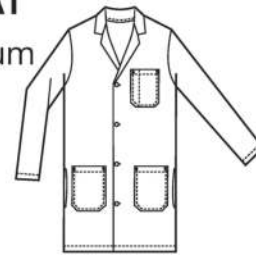
Sizes: 32-50  
(52-56 extra charge)



### MEDIUM LENGTH LAB COAT

#### 39" STAFF LENGTH LAB COAT

- Length based on size medium
- Button front
- Left breast pocket with pencil stitch
- Two lower outside pockets
- Side slits for pocket access



80% Polyester / 20% Cotton Poplin  
**412**

Sizes: XS-XL (2XL, 3XL extra charge)

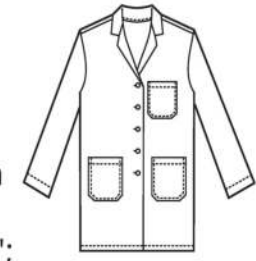


## WOMEN'S COATS

### LONGEST LENGTH LAB COAT

#### 39" TRADITIONAL LENGTH LAB COAT

- Length based on size 8
- Button front
- Left breast pocket
- Two lower outside pockets
- Two piece attached back belt with button closure
- Female Height: 5'9"; Bust Size: 36"; Wearing size M



65% Polyester / 35% Cotton Poplin  
**477**

Sizes: 6-20, 42-46  
(48-50 extra charge)



### MEDIUM LENGTH LAB COAT

#### 34" SKIMMER LENGTH LAB COAT

- Length based on size medium
- Button front
- Left breast pocket
- Two lower outside pockets
- Stitched down back belt
- Female Height: 5'9"; Bust Size: 36"; Wearing size M



65% Polyester / 35% Cotton Fine Line Twill  
**436**

Sizes: 2XS-XL  
(2XL, 3XL extra charge)



THE FASHION SEAL®  
**GUARANTEE**  
Customer First, Every Time.